

UNLOCKING SOLUTIONS

United Way



Connecticut United Ways

2025 Policy Agenda



CREATE A FULLY REFUNDABLE CONNECTICUT CHILD TAX CREDIT

Benefits 550,000 children and 75% of families.

- Returns money to families which **allows them to buy essential items** that other programs don't cover.
- Provides a **positive return on investment** that boosts our economy.



STRENGTHEN 211 TO MEET INCREASING DEMAND

300% increase in requests since 2019 (excludes COVID).

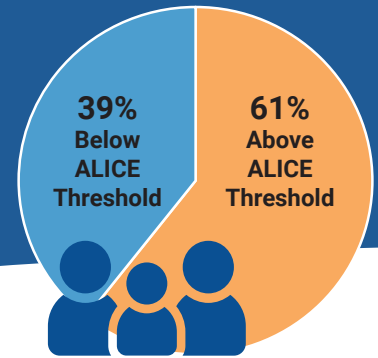
- Serve an **additional 1,700 callers** every week with additional call center specialists.
- **Reduce youth disconnection** through a new app, awareness campaign and flex funds.

JOIN OUR MOVEMENT FOR ALICE AT
CTUNITEDWAY.ORG/ADVOCACY

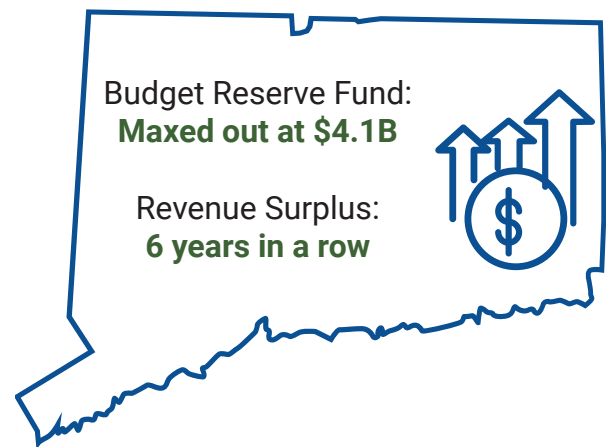
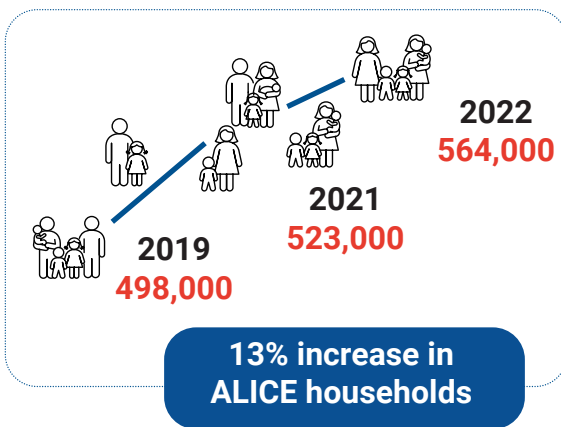


ALICE (Asset Limited, Income Constrained, Employed) is a national, data-driven research initiative that reveals a hidden crisis across every zip code, race and background. Families living below the ALICE Threshold, the minimum income needed for household essentials in their area, are the backbone of our economy and communities. Connecticut United Ways are committed to shedding light on this issue and unlocking solutions to ensure that everyone has the opportunity to thrive.

2 out of 5 Connecticut Households are ALICE

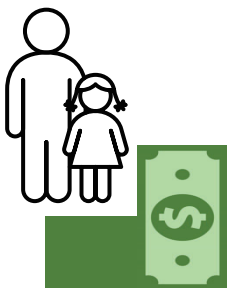


Despite historically strong state budgets, the number of ALICE households continues to rise.



Families need more resources than their jobs pay to provide for their families.

A nursing assistant raising one child:



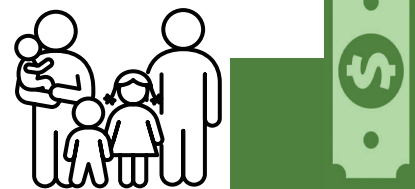
Makes \$18/hour
Needs \$35/hour
Short: \$17/hour

Cashiers raising two children:



Makes \$32/hour
Needs \$57/hour
Short: \$25/hour

Teaching assistants raising three children:



Makes \$46/hour
Needs \$67/hour
Short: \$21/hour

Based on the hourly wage needed to reach the ALICE Threshold for one or two parents working full-time at 40 hrs/wk in a given career.

ALICE.CTUNITEDWAY.ORG

